

Potential sites for drain pipe solutions – Catchment officers tools

Sebastian Piet Zacho, SEGES

LEVA Skype Meeting - Åtgärdsarbetet 2th September 2020

SEGES

STØTTET AF
Promilleafgiftsfonden for landbrug



Interreg
North Sea Region
WaterCoG
European Regional Development Fund



EUROPEAN UNION



Kollecto – Catchment Officers registration tool

Sidst synkroniseret
I dag 13:11

Projekter

Online projekter

Kort

Hent kortlag

Synk. data

Synk. billeder

Log ud

Filtrering

Landmand	Konsulent	Type	Status
	Helle Kalkrup		

52 projekter

Konsulent	Landmand
Helle Kalkrup 2 tiltag	Klaus Noe Remmerstrandvej 9, Lemvig
Helle Kalkrup 1 tiltag	Claus Borg Idomlundvej 11, Holstebro
Helle Kalkrup 1 tiltag	van Santen I/S Fjordvejen 7, Vemb

App developed for tablets (works offline)

Main idea: Farm and field visit registration

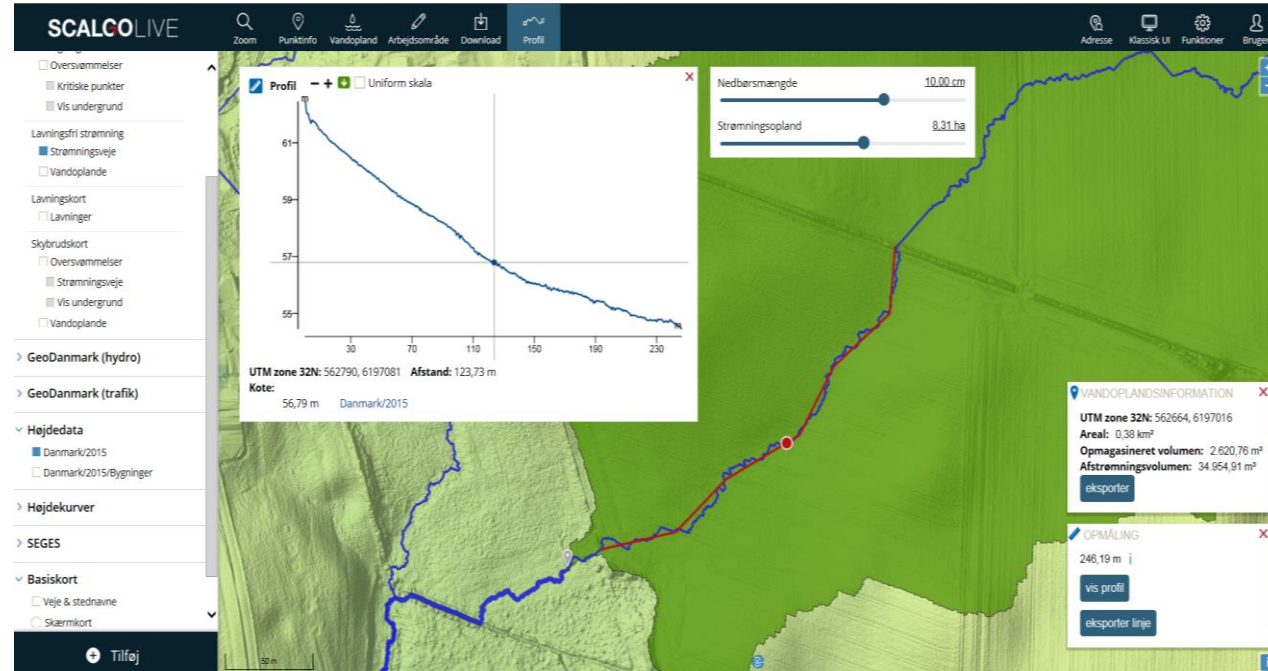
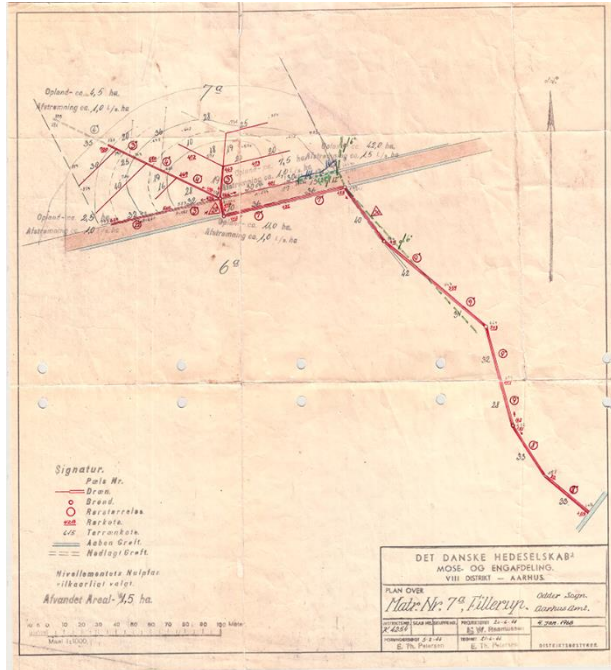
- Potential sites for drainpipe solutions
- Drainage systems
- Local drainage systems boundaries

Now also a tool for keeping hold of the workflow (permits, establishment, payment of grants etc.) for each project

Keeps track of nitrate drainage water samples for each project

Keeps track of the work with making local drainage catchment boundaries

SCALGO Live – Predicting drainage systems and defining catchments



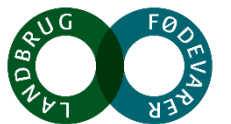
Originally aimed at flood risk management

Used by the Catchment Officers to estimate catchment sizes and to predict the location of large drainage systems and gain knowledge about the terrain.

The tool is an online web-tool and is based on a digital elevation model from 2018.

Demostation: SCALGO Live

SEGES



Finding the perfect spot

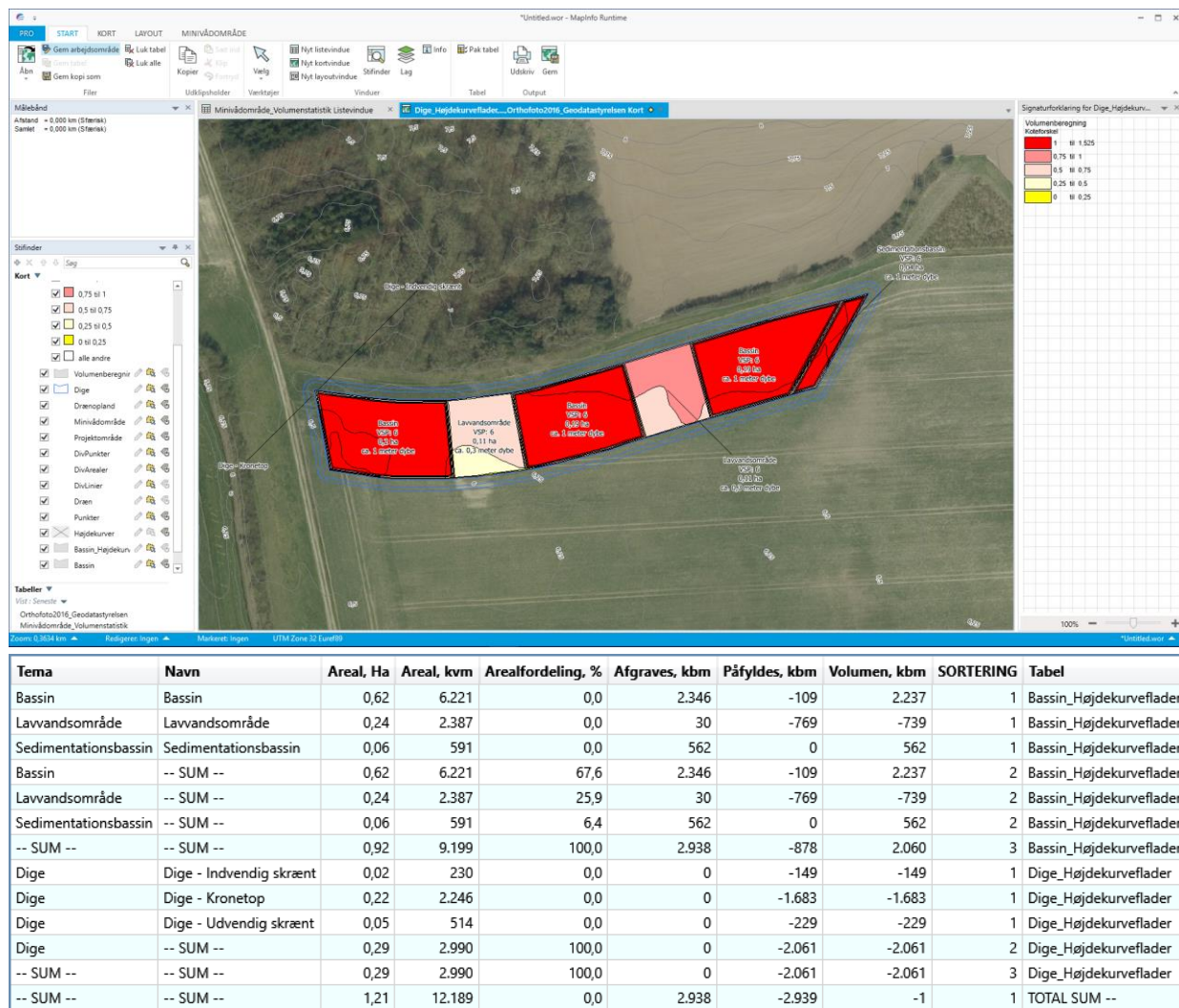


Soil removal is expensive – finding the best site in the terrain is key for cost-effectiveness



Knowing the exact depth of the drainage system is essential

Estimating excavation in MapInfo



Add-on tool for MapInfo (digging-tool)

Transforms a digital elevation model into polygons – own produced polygons can then be subtracted

Estimates the requirement of soil for dikes

Excavation is in many cases the factor that defines whether or not a project is realistic

Valuable impute when having contractors bidding for the job

Design and excavation estimation is usually a job for (expensive) external consultants – but having this tools contributes to the overall cost-effectiveness.

Demostration: Diggin tool for MapInfo